

## NOMAD

### Collection 2022

*“The furthest journeys are the ones travelled in our minds“*

Joseph Conrad

Fabrics create emotions, give rise to longings and memories. Patterns, colours and touch send us to other countries and on journeys of association without even having to change location. Here it is only our senses that need to be cosmopolitan and ready to “check in” to acquire fascinating new experiences. And we take the most beautiful of these home with us as souvenirs – to surround ourselves with them and enjoy the impressions gathered on these expeditions time and again. The nya nordiska collection **Nomad** therefore extends an invitation to be guided by this personal compass. In fabric worlds that enrich our own journey through life – day by day.

### At home the world over

Where to next? The inspirations of our collection 2022 take us in many exciting directions – towards art, for example, with the abstract one-off patterns of **Lona**. Or towards fashion on whose catwalks plain fabric **Joris** would send audiences into raptures with its cool-modern air just as much as it would adorn the windows of your home. Another thematic path, in typical nya nordiska style, leads right to nature: as an abstract foliage collage on the transparent woven **Menta CS**, as a half-moon texture on jacquard **Lucia CS**, or the vertical stripe of **Almina**, that runs like a river over a semi-transparent base fabric. Leading us into the realm of haptic highlights are **Pina** and **Pinati** with mini pompons, **Arik** and **Bente** with a soft wool material. And, finally, the **Rio CS** series with one solid fabric and two striped versions in a current colour combination proves that you can also always break new ground with a classic pattern.

### Today and in future

Whoever embarks upon a journey responsibly – be this in their thoughts and in reality – does so with an eye on their carbon footprint. nya nordiska also feels closely attached to the Scandinavian view here, with environmental and resource protection forming an integral part of the corporate DNA. This encompasses nya nordiska fabrics made from recycled materials as well as the sustainable use of natural fibres, the use of green power and modern Cloud solutions to reduce paper consumption. Jump aboard and come with us on this trip into the future.

# nya nordiska

## 1. Lona

approx. 150 cm

2 colours

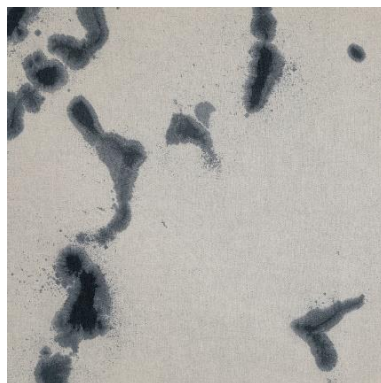
100 % linen



Art for all settings. **Lona** is the name of the design trick that gives rise to one-off textiles for sophisticated decorations during the dyeing process. The abstract motif is applied to 100% linen using tie-dye technology. Its organic shape in various intensities of black features without a repeat on the base fabric available in two tones. Being both artful and natural, **Lona** finds the matching setting in every surrounding – from purist architectural interiors to modern country homes.



21 ivory



22 flax

# nya nordiska

## 2. Joris

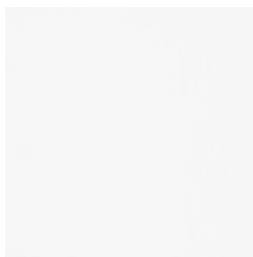
approx. 145 cm

9 colours

100 % polyamide (recycled)



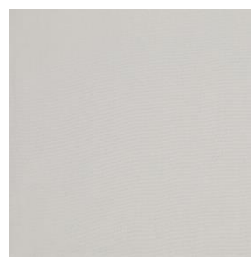
Fashion for windows. **Joris** projects the style and radiance of current fashion to interiors. With its elegant drape and matt surface this single-coloured fabric exudes a relaxed, hip feel underscored even further by its dry touch and refined sound in movement. The piece-dyed furnishing fabric woven from recycled polyamide can be made into versatile draperies from curtains to pull-up blinds. Its nine-colour scale comprises pastel shades as well as dark blue and grey tones. Tailor-made for style-assured applications.



01 white



02 ivory



03 natural



04 powder



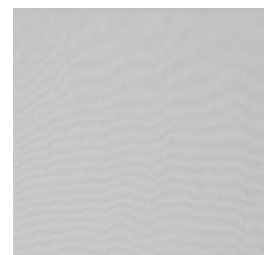
05 hunter



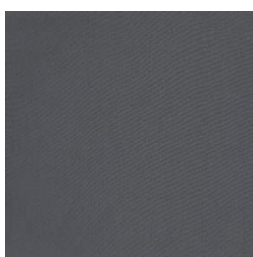
06 navy



07 oak



08 silver



09 graphite

## 3. Lucia CS

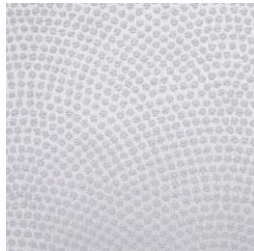
approx. 138 cm

8 colours

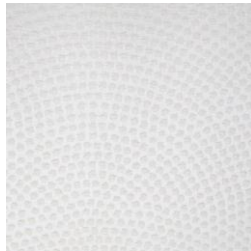
100 % polyester Trevira CS



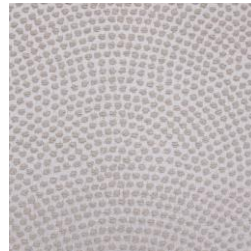
The “textile light figure”. **Lucia CS** provides interiors with an exclusive air. This jacquard in Trevira CS appears like a combination of silk and linen with its elegant, heavy drape. Dots in a matt weft yarn stand out three-dimensionally from the shimmering background and arouse associations with crescent moons due to their semi-circle array. With lively panache **Lucia CS** carries over their radiant energy to interiors. Eight background colours ranging from pastel shades to navy and graphite make the dots that are one nuance darker look especially three-dimensional.



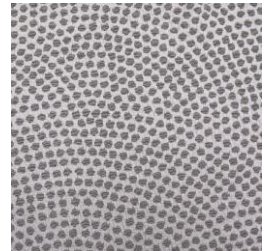
31 silver



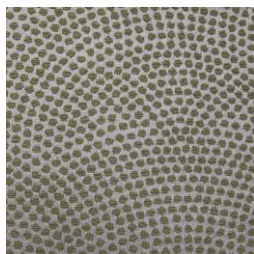
32 ivory



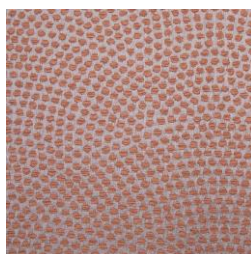
33 natural



34 grey



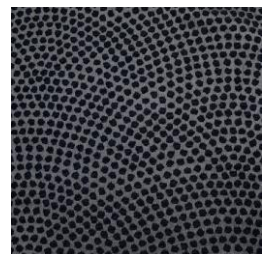
35 moss



36 sand-rose



37 graphite



38 navy

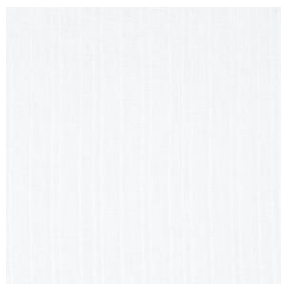
## 4. Almina

approx. 300 cm

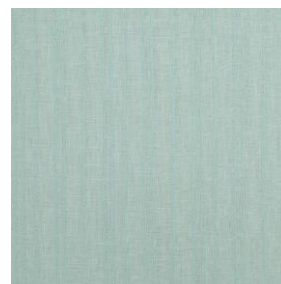
4 colours

100 % polyester recycled

City - Country - River. **Almina** is suitable for universal applications – from urban lofts to modern country homes. The semi-transparent fabric is an accomplished symbiosis of naturalness and modern technology: its piece-dyed base material made of recycled polyester features a typical linen look while the fancy yarn used for the fine, irregular vertical stripe looks hand-made. A texture reminiscent of the irregular surface of a river that breathes life into the pattern and interiors with four delicate natural tones.



01 white



02 salvia



03 grey



04 anthrazite

# nya nordiska

## 5. Arik

approx. 140 cm  
Martindale 35,000 rubs

9 colours

100 % wool



Cool Wool. **Arik** is a natural talent. Both lightweight, rugged with 70,000 Martindale rubs and easy-care it serves both as an elegant upholstery fabric and as a furnishing fabric with a beautiful drape and attractive reverse. Made of 100% wool it controls moisture and heat and can therefore contribute to the improvement of the indoor climate. With its soft feel it is also pleasant to touch. The cubic-abstract all-over design thrives on the contrast between warp and weft and – depending on the colour combination – produces either a modern Scandinavian effect or a charming retro look.



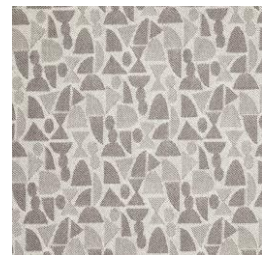
01 sand



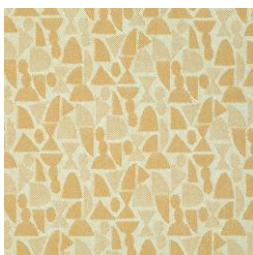
02 powder



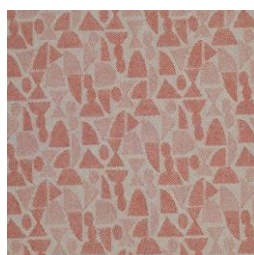
03 grey



04 natural



05 mustard



06 siena



07 royal



08 rust



09 hunter

## 6. Bente

approx. 140 cm  
Martindale 35,000 rubs

8 colours

100 % wool

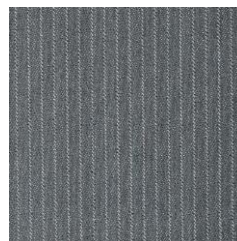
Upgrade for a classic. **Bente** re-interprets the pinstripes known from men's suits as a versatile soft furnishing fabric. As homely as it is abrasion-resistant, this 100% wool fabric "dresses" upholstered furniture in a timelessly beautiful way and is also suitable for draperies with an attractive double-face effect. It scores points with its indoor-climate improving properties and is even machine-washable on a wool cycle. **Bente** lends itself to numerous furnishing ideas – either in a straightforward solo appearance or in concert with Arik for a harmonious mixture of wool fabrics. The carefully coordinated colour scale always strikes the right note.



01 sand



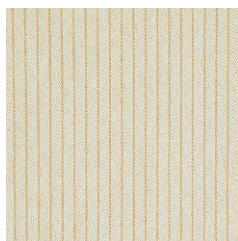
02 powder



03 grey



04 natural



05 mustard



06 siena



07 rust



08 hunter

## 7. Pinati

approx. 325 cm

3 colours

100 % polyester



Right to the point. For this modern twist on the classic Plumetis jacquard dots “dance” out of step with consummate ease. The fancy yarn this Fil-coupé is woven from “blows up” its clipped threads in a pompon style – anew after each washing. This provides the pattern on the transparent base fabric with both visually and haptically appealing three-dimensionality. In three soft non-colours **Pinati** gets right to the decorative point for modern window design in a featherweight way.



21 white



22 sand



23 grey



## 8. Pina

approx. 325 cm

3 colours

60 % linen, 40 % polyester

Fluffy as a fun factor. **Pina** varies the dot theme all naturally on a semi-transparent linen background. Featuring two mini pompons each, the irregularly placed Fil-coupé appeals to both the eye and the fingertips while spreading an upbeat atmosphere in the room. Ivory, sand and grey as finely dosed colour alternatives revisit the fabric classic for a fresh new contemporary revival. A fabric that combines warmth and homeliness with a playful, modern appearance and easy-care washability.



01 ivory



02 sand



03 grey

## 9. Menta CS

approx. 315 cm

6 colours

100 % polyester Trevira CS



Sheer, sheerer, **Menta CS**. The fineness of the transparent base fabric sets new standards in the segment of Trevira CS wovens fit for public use. It conveys a sense of weightlessness that it is underlined even further by the digitally printed design. Abstract foliage in that typical, Nordic nya nordiska style varies in transparency due to its overlaps – optionally available in three soft non-colours or three high-impact tones. With its modern nature motif, this easy-care fabric exudes vitality for both contract and residential interiors – in a gossamer style.



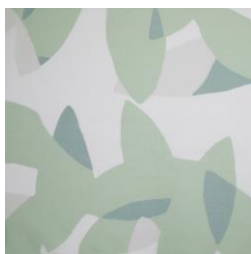
01 natural



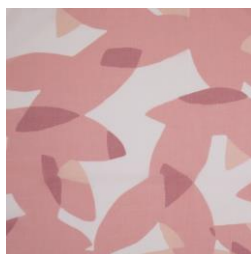
02 oak



03 graphite



04 salvia



05 siena



06 gold

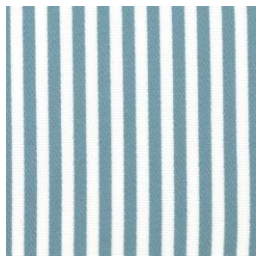
## 10. Rio Bravo CS

approx. 140 cm  
Martindale 25,000 rubs

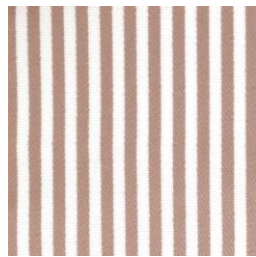
12 colours

100 % polyester Trevira CS

New whiteness. Even classic patterns need continuous face lifts to retain their decorative validity. With its particularly clear woven stripes **Rio Bravo CS** is the current interpretation of this design so indispensable to the nya nordiska spectrum. Its clear white background provides the 0.5 cm fine stripes in timeless colours and fresh pastel shades with a modern radiance. Two discreet colour versions in camel complement the colour palette. This is virtually a revitalising therapy for upholstery and drapery in both urban and modern-rural environments.



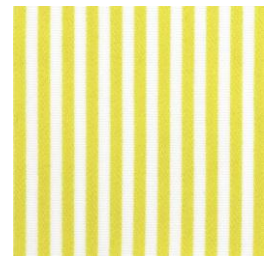
201 steel



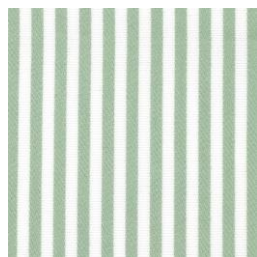
202 powder



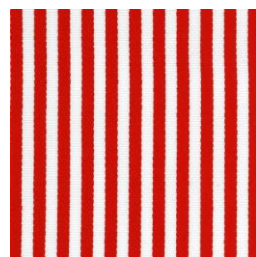
203 oak



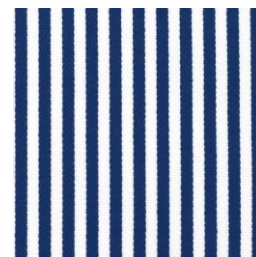
204 yellow



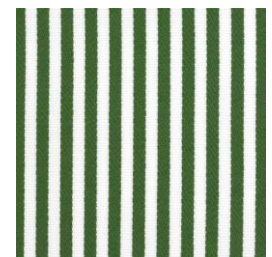
205 salvia



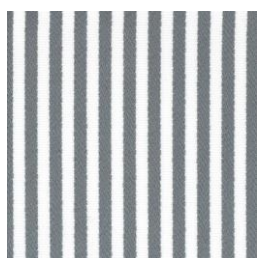
206 red



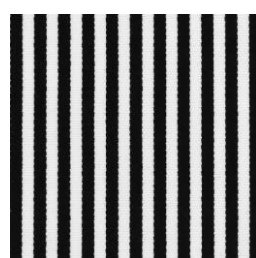
207 royal



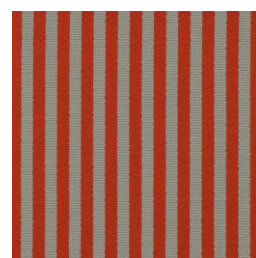
208 hunter



209 grey



210 black



211 camel-red



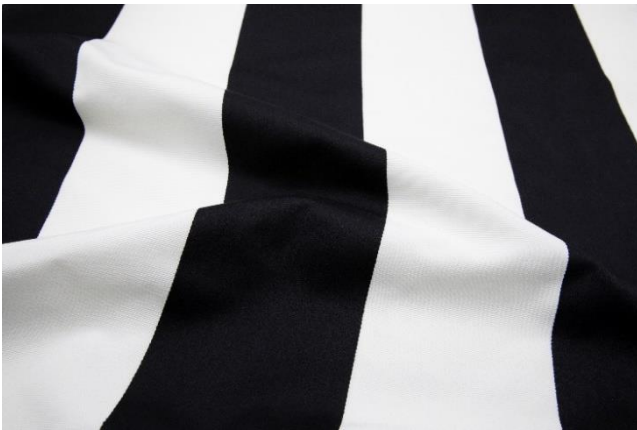
212 camel-black

## 11. Rio Grande CS

approx. 140 cm  
Martindale 25,000 rubs

12 colours

100 % polyester Trevira CS



Refreshment “en bloc”. Featuring as number 2 in the Rio trio is the block stripe **Rio Grande CS** that presents all the benefits of this design group in a 12 cm “broad-band format”. Colours like steel, powder, oak or salvia unfold modern “joie de couleur” on wide expanses. The colour change is supported by a texture variation here: with a satin weave the coloured stripes also set themselves apart from the Panama weave background. The hard-wearing material in 100% Trevira CS is suitable both as decoration and upholstery fabric.



301 steel



302 powder



303 oak



304 yellow



305 salvia



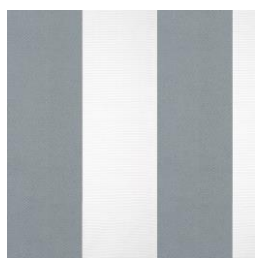
306 red



307 royal



308 hunter



309 grey



310 black



311 camel-red



312 camel-black

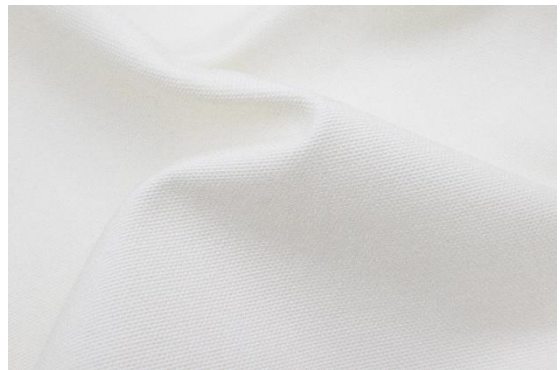
## 12. Rio Uni CS

approx. 140 cm  
Martindale 25,000 rubs

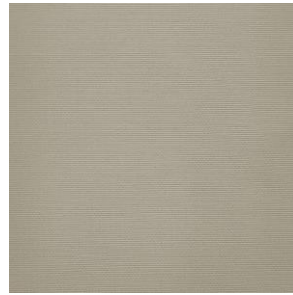
4 colours

100 % polyester Trevira CS

Winning four. The fabric quartet made of Trevira CS in four natural solid tones provides the perfect basis for combinations with the Rio Bravo CS and Rio Grande CS stripes. As a “solo artist” **Rio Uni CS** combines a finely textured surface thanks to its hopsack weave with a matt look and dry touch. 25,000 Martindale rubs qualify the flame-retardant woven for use as an upholstery and drapery fabric in both facilities and private interiors. Ivory, camel, grey and black invite users to a topical cocktail with the striped patterns of the Rio series – right down to the nuance.



101 ivory



102 camel



103 grey



104 black