

Collection 2024

Horizon

When our gaze wanders to the horizon, the pettiness of everyday life moves out of focus for a moment – while we enjoy the far-sighted vision, the peace and the relaxation that all convey a sense of the big picture. Such elementary moments of well-being are now to be made tangible in interiors thanks the fabrics in our 2024 collection. By means of natural fibres, colours and textures they will re-interpret the weather and clouds, times of the day and year, the lines and silhouettes of that magical dividing line between heaven and earth. As impressions guiding us from the northern hemisphere to the sunny south – thereby both subtly and intriguingly broadening our furnishing horizon.

Charming variations on vistas

Here the views can be as individual as their observers themselves: from the straight dividing line between sky and ocean to the zig-zag silhouette of a mountain ridge, not forgetting the graduated shades and colours projected by the rising sun against the sky. The fabrics in the Horizon Collection allow you to design vistas that perfectly match both the interior and your own wishes. The picturesque accent here comes care of patterned fabrics such as jacquard **Noor**, linen-raffia blends like **Fara** or the 100% natural woven **Molina**. High-impact solids like **Lovis** and **Lykke** transfer the colour scale from sky and earth to soft furnishings and furniture. Silk moiré **Liv** and the chintzed linen **Lamis** reflect the subtle reflexes of sunlight on the sea. The change between day and night finds its textile counterparts in the double-face wovens **Toja** and **Tamo**, while the braided fabric **Cosmo**, pleated article **Ravello** and knit-look **Smilla** extend the visual diversity to include tactile stimuli giving rise to a rich array that appeals to all the senses.

Atmosphere as a gift of nature

With its design, its values and materials the Horizon Collection is completely in line with the tradition of nya nordiska. It brings together high-quality furnishing textiles embodying quality, timelessness and an appreciation for nature and its raw materials and primarily uses natural fibres to this end. These create a one-of-a-kind atmosphere that retains its validity for years, thereby breathing life into the sustainability approach – an essential aspect for nya nordiska's foresighted gaze into the horizon.

1. Fara

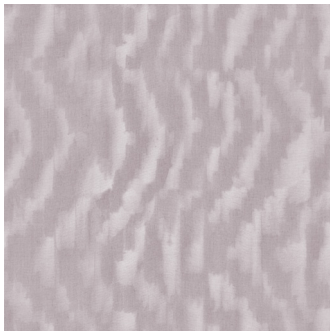
approx. 140 cm

5 colours

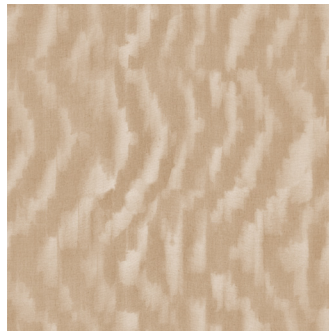
55% polyamide, 45% linen



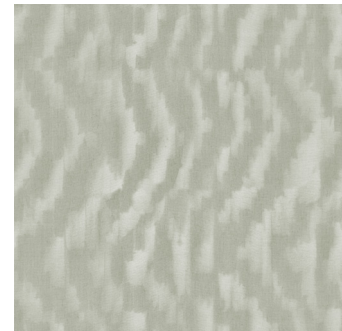
Down to a fine art. **Fara** even spreads Mediterranean flair in northern hemisphere interiors with consummate ease. Its lively wave pattern looks as if immortalized on canvas in large brushstrokes, its colour scheme like a foray into coastal flora. Mimosa, sage and lavender, complemented by terracotta and stone grey, blossom as a warm palette from which one tone and all its shades then extends over a white background. The sophisticated spray-dye printing technology deployed here makes this casual linen-raffia blend suitable for double-face uses – also making an impact when teamed with fabrics like Macao, Karima and Cosmo.



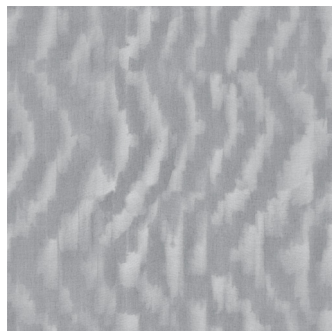
01 lavender



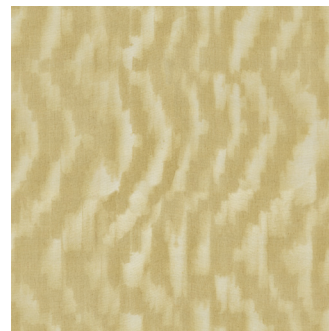
02 terra



03 salvia



04 silver



05 ginger



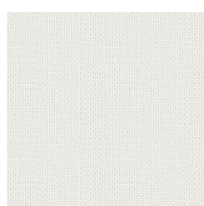
2. Cosmo

approx. 130 cm
Martindale 100,000 cycles

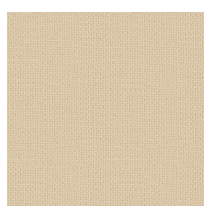
15 colours

65% polyamide, 35% cotton

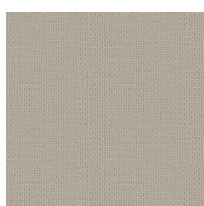
Fashion compass. **Cosmo** as a fibre blend popular on fashion catwalks now broadens its horizons branching out into interiors. Be it as a cushion, curtain or a hard-wearing upholstery fabric, Cosmo turns furniture into “it-pieces” as it does windows. A feeling of Mediterranean lifestyle is woven into its refined braided textures with a matt shine and soft touch. In 15 single colours, ranging from ivory and sand through aqua and maize to graphite and black, it attractively fuses with Nordic chic – as a solo or in a mix & match with Macao, Karima and Fara.



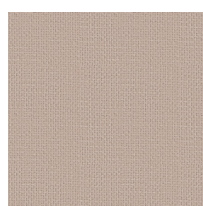
21 ivory



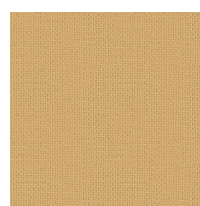
22 sand



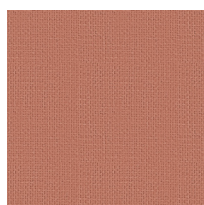
23 flax



24 natural



25 maize



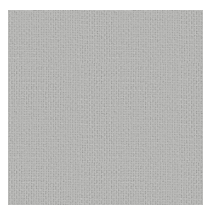
26 cinnamon



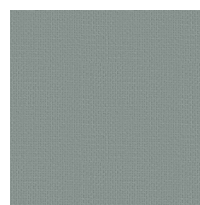
27 oak



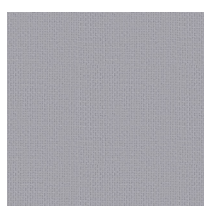
28 smoke



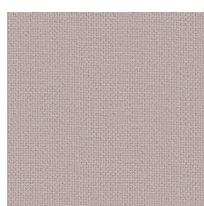
29 flint



30 aqua



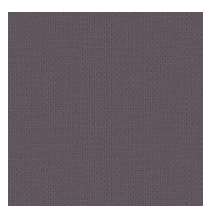
31 silver



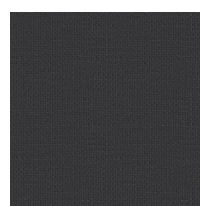
32 powder



33 navy



34 graphite



35 black



3. Toja

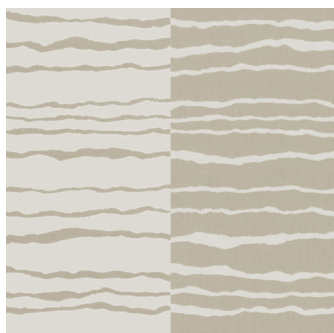
approx. 145 cm
Martindale 15,000 cycles

6 colours

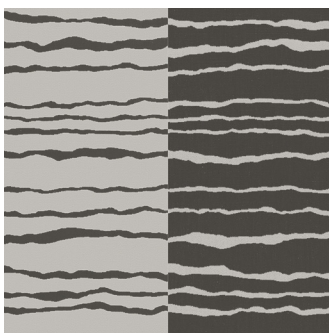
80% cotton, 20% linen



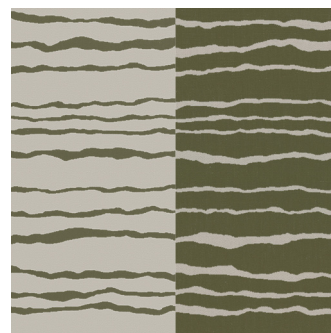
Nature's skyline. Reminiscent of mountain ridges looming in the distance, **Toja**'s horizontal striped pattern comes in six sand, stone, Rosewood and blue shades – colours also hailing from that interspace between heaven and earth. This cotton satin made from pure natural fibres embodies high quality with refined understatement. As light-weight upholstery or cushion covers it convinces us with its soft touch while as curtains its heavy, flowing drape elegantly comes to bear. The double-face fabric with its positive & negative effect, at times lighter at others darker, always shows itself in the best light – preferably also with solid fabric Tamo.



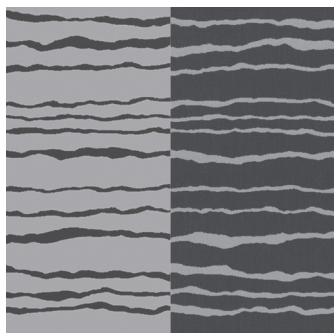
11 bone



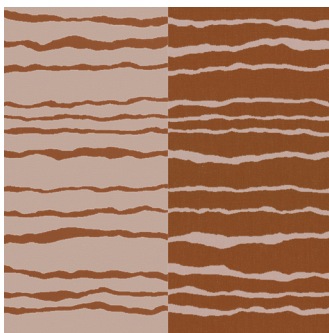
12 flax



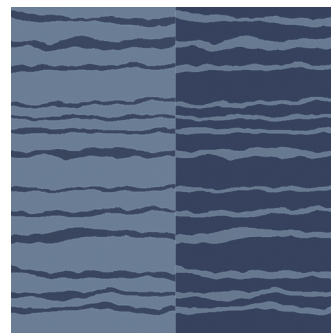
13 sand



14 silver



15 rosewood



16 arctic



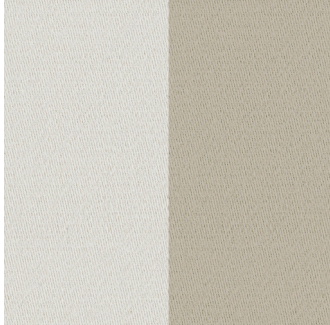
4. Tamo

approx. 145 cm
Martindale 15,000 cycles

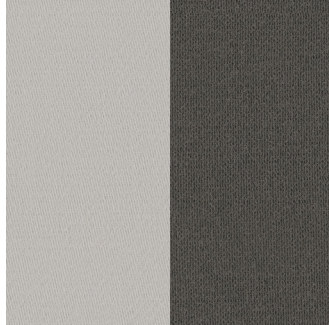
6 colours

80% cotton, 20% linen

Duet of night and day. Furnishing fabric **Tamo** interprets the change from brightness to twilight as a plain fabric with one lighter and one darker side, thereby always putting interiors in the right light. Its colour spectrum encompasses finely nuanced naturals such as bone, flax and sand alongside a warm sienna red, and with silver and arctic it boasts further “ingredients” for decorative diversity. Woven from the same exquisite natural fibres as Toja, this two-tone solid provides broad scope for staging interiors – both on its own or in an interplay with its striped counterpart.



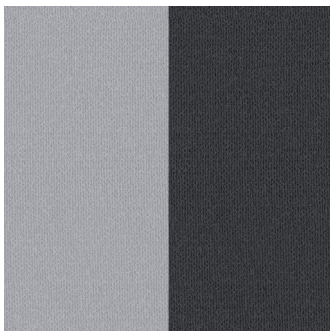
01 bone



02 flax



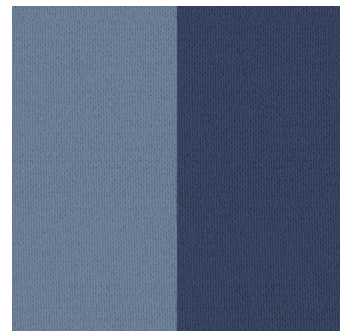
03 sand



04 silver



05 rosewood



06 arctic



5. Lamis

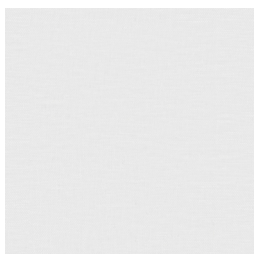
approx. 300 cm

8 colours

100% linen



Fine highlight. **Lamis** gives interiors a unique, natural upgrade and is high-profile since the chintz in semi-transparent linen shines extra-wide and with a fine lustre. This lustre appears softly dimmed with the pale flax nuances but increases in shine the darker its tone gets. This gives the lightweight furnishing fabric, in tones like berry, graphite, oak and anthracite, the shimmering intensity of the sun sinking into the sea. A natural spectacle you can bring to your own home in eight solid colours.



01 ivory



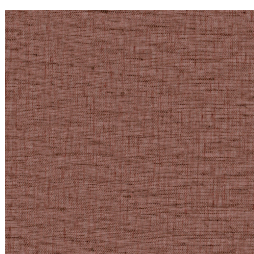
02 sand



03 natural



04 smoke



05 berry



06 graphite



07 oak



08 anthracite



6. Liv

approx. 140 cm

16 colours

70% cotton, 25% silk,
5% polyacrylic

On the Silk Road. **Liv** is the elegant “crowning glory” to exclusive interiors. Its interplay of silk and moiré captures the movement and reflexes of light mirrored on the sea. With its refined ribs and the inimitably fine lustre of the natural material that is silk, Liv is a modern classic that when lined can be combined both effectively and timelessly with interiors of all styles. In addition to its elaborate design and soft drape, its exciting colour scheme of 16 tones caters to the complete range of styles from modern to traditional.



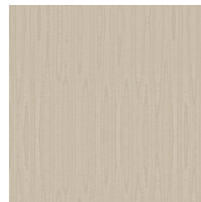
21 white



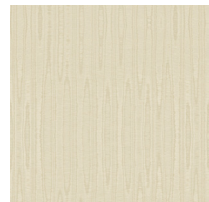
22 pearl



23 bone



24 sand



25 champagne



26 copper



27 silver



28 flint



29 smoke



30 graphite



31 lavender



32 powder



33 dustrose



34 sky



35 salvia



36 hunter

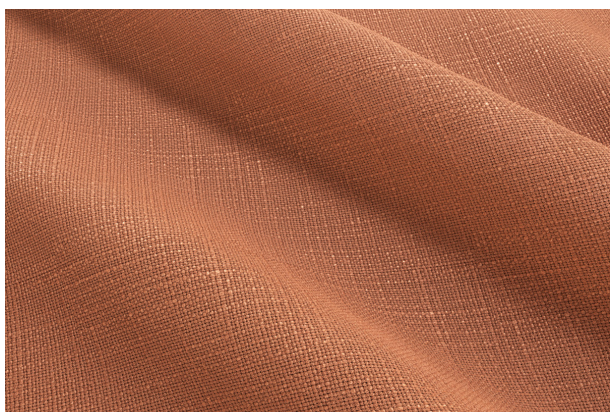


7. Lykke

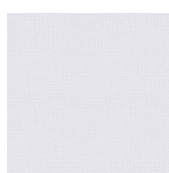
approx. 300 cm
Martindale 80,000 cycles

28 colours

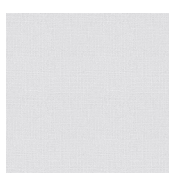
100 % polyester (recycled)



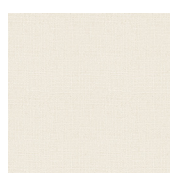
A textile stroke of luck. **Lykke** (meaning luck, in English) injects both energy and rhythm into interiors. Its 28 tones come in the intensity of a low-sitting sun in autumn. Be it almond, olive, berry, peach, cinnamon, burgundy, curry, walnut or one of the other numerous options – here there's a favourite shade for everyone. This 300 cm wide textile multi-talent combines a matt look with a particularly soft touch and can be used universally for curtains, blinds and as a lining or upholstery fabric. Lykke projects the natural appearance of a linen-cotton woven while in reality it is sustainably manufactured from recycled polyester.



21 white



22 ivory



23 bone



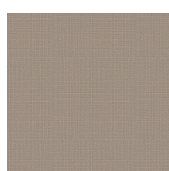
24 pearl



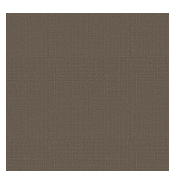
25 almond



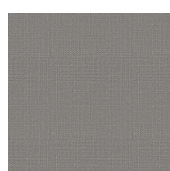
26 sand



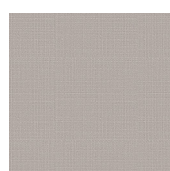
27 flax



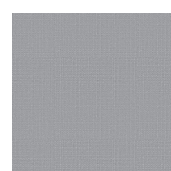
28 oak



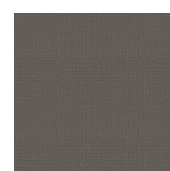
29 grey



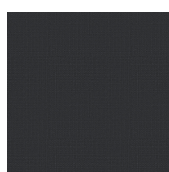
30 flint



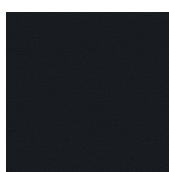
31 silver



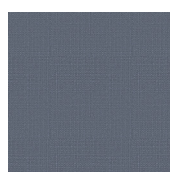
32 stone



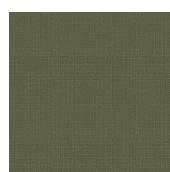
33 anthrazite



34 black



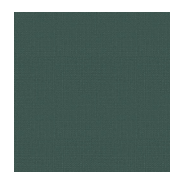
35 slate



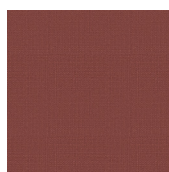
36 olive



37 reseda



38 emerald



39 berry



40 peach



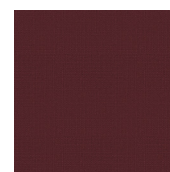
41 cinnamon



42 dustrose



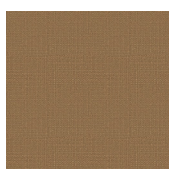
43 mauve



44 bordeaux



45 powder



46 curry



47 mustard



48 walnut



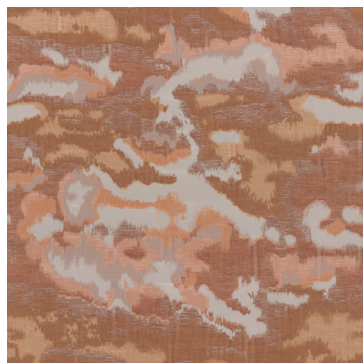
6. Noor

approx. 140 cm

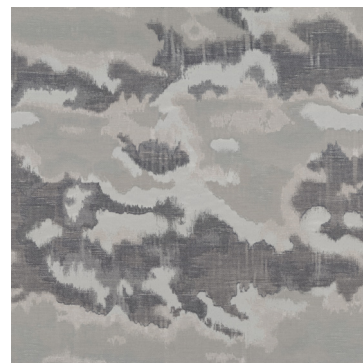
4 colours

55% cotton, 30% polyester,
15% viscose

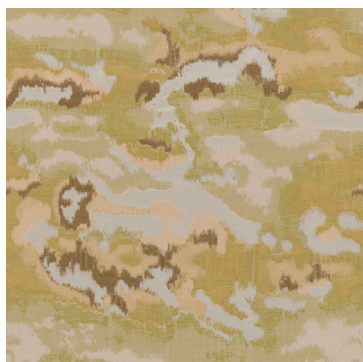
Above the clouds. **Noor** is the name of the creative “flight of fancy” that gives interiors a decorative boost. The jacquard pattern features abstract cloud configurations in changing light, from grey morning dusk and hazy sunny yellow to clear azure blue and evening glow. The added contrast between brushed cotton for the woven-in motif and the smooth background gives this soft furnishing a 3D look and special aura. Noor can be lined to serve as an elegant curtain fabric or reveal its nuanced interplay of colours when unlined and backlit.



01 cinnamon



02 graphite



03 ginger



04 slate

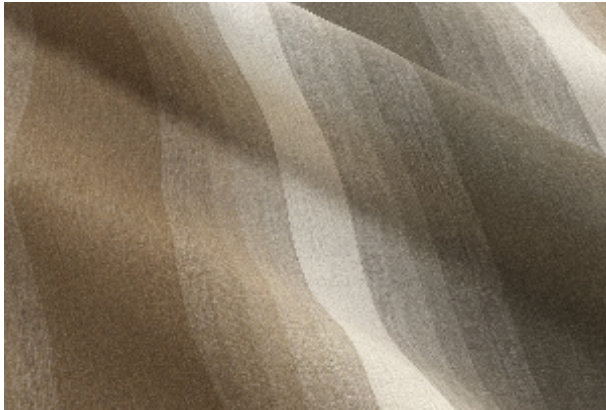


7. Molina

approx. 320 cm

4 colours

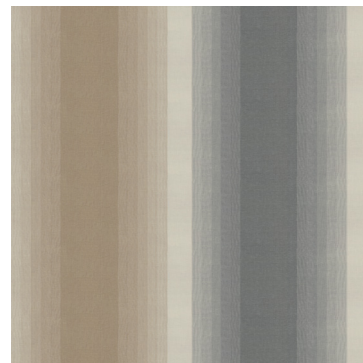
70% wool, 30% linen



Naturally soft focus. The colours on the horizon changing from sunrise to sunset provide the inspiration for **Molina**. What nature stages horizontally, is transposed vertically into this textile counterpart – with a maritime, earthy, natural or graphic colour spectrum spreading over a 320 cm width. Ivory makes for flowing transitions between the individual tones – just like the incidental light softly illuminating the semi-transparent natural woven of wool and linen.



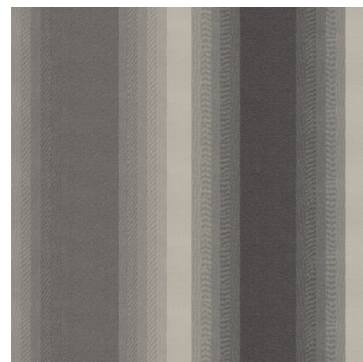
01 natural



02 slate



03 olive



04 graphite



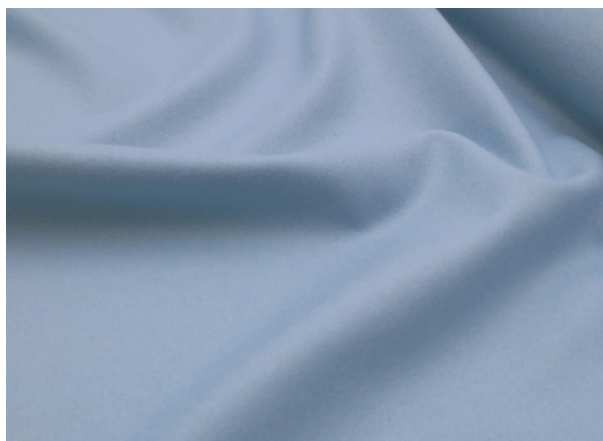
10. Lovis

approx. 150 cm
Martindale 15,000 cycles

15 colours

100% wool

Love this. **Lovis** brings charming “soft skills” to the table with its soft touch and supple drape. This double-face fabric made of finest wool is a real delight to the touch and creates a pleasant and cosy atmosphere, be it as a curtain, cushion or lightweight upholstery fabric. This feel is also enhanced by the fabric’s own natural properties that positively influence the indoor climate. The 10 mottled natural tones and 5 high-profile colours can be coordinated just as exquisitely with purist, minimised architecture as with a sensual retro look.



01 cashmere



02 oak



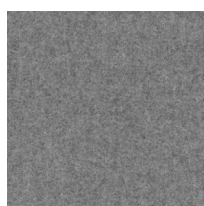
03 sand



04 bone



05 silver



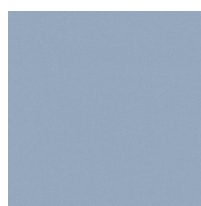
06 grey



07 yellow



08 azure



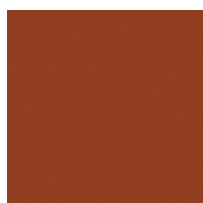
09 sky



10 olive



11 hunter



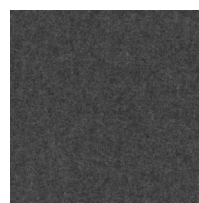
12 siena



13 walnut



14 stone



15 anthrazite



11. Smilla

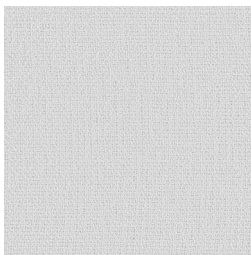
approx. 300 cm

12 colours

100% polyester



Decorative “networking”. With its enticing knit texture **Smilla** transposes summer lightness and warmth into a fine fishnet look that toys with incidental light. In keeping with that relaxed easy seaside living in the beach season, all shades of summery pastel shades from sand, wind and waves are available here, casting their spell on us any time and any place. What’s more, this appealing fabric with its natural matt lustre also scores points with easy-care properties – a new decorative look that shouldn’t “slip through the net”.



01 ivory



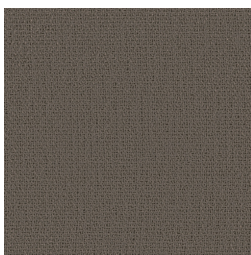
02 natural



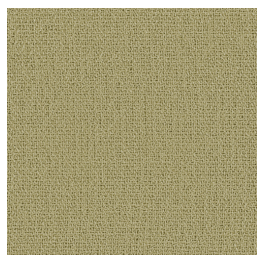
03 sand



04 flax



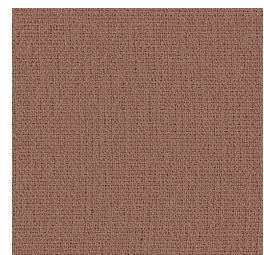
05 oak



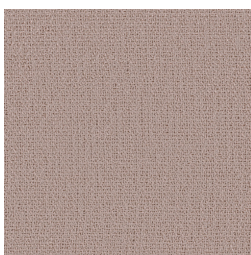
06 ginger



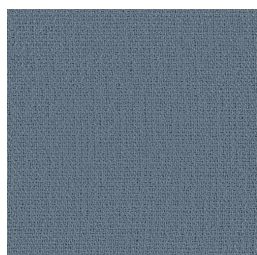
07 reseda



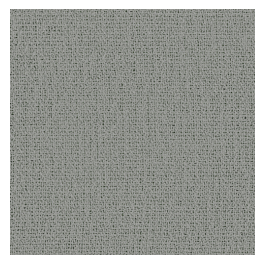
08 dustrose



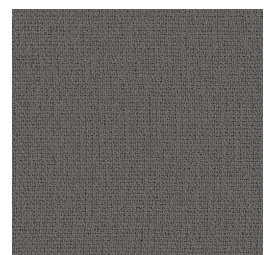
09 orchid



10 slate



11 silver



12 graphite



12. Ravello

approx. 310 cm

5 colours

100% solution dyed acrylic

All-weather fabric. **Ravello** whisks us away on a trip to that picturesque coastal village of the same name on the Amalfi Coast. Its terraced landscape is echoed by the soft undulating tiers of this double-width, semi-transparent pleated fabric. The three-dimensional texture looks just like linen but is in fact 100% solution dyed acrylic, making Ravello suitable for both in and outdoor use. Fast-drying, especially light-fast and mildew-resistant, it exudes textile charms in natural sand, stone and sun hues – from living rooms to patios and terraces.



01 ivory



02 flax



03 maize



04 silver



05 graphite

